

Hanham Hall Bristol

UK's first large-scale housing scheme to achieve the 2016 zero-carbon standard



Client: Barratt Bristol
Planning Authority: South Gloucestershire Council
Number of Homes: 185
Size: 3.8
Dwellings per Hectare: 51.3
Start Date: 2008
Completion date: 2013
Sector: Suburban, sustainable development
Services: Architecture, Planning, Sustainability, Graphics, Landscape

Project Description: Hanham Hall provides 187 new homes for private and affordable housing. Located in South Gloucestershire, 7km from the centre of Bristol, the nine-hectare site adjoins the green belt, bordered by suburban housing. Landlocked on site the Hall has been refurbished and successfully adapted. Central to the vision of the development it provides an important sense of identity and history, adding vibrancy to the community through uses such as office space, a crèche, and cafe. The layout and style of the design respond to the site's unique characteristics and constraints. Green belt restrictions and the need to retain views of the Hanham Hills meant more than a third of the site could not be built on. All homes achieve the new 'Zero' standard and outperform the building regulations and other widely used industry standards. Initial Building for Life 12 assessment shows 12 green lights.

Site: Bristol



Image: Three bed cottage housetype overlooking a pond



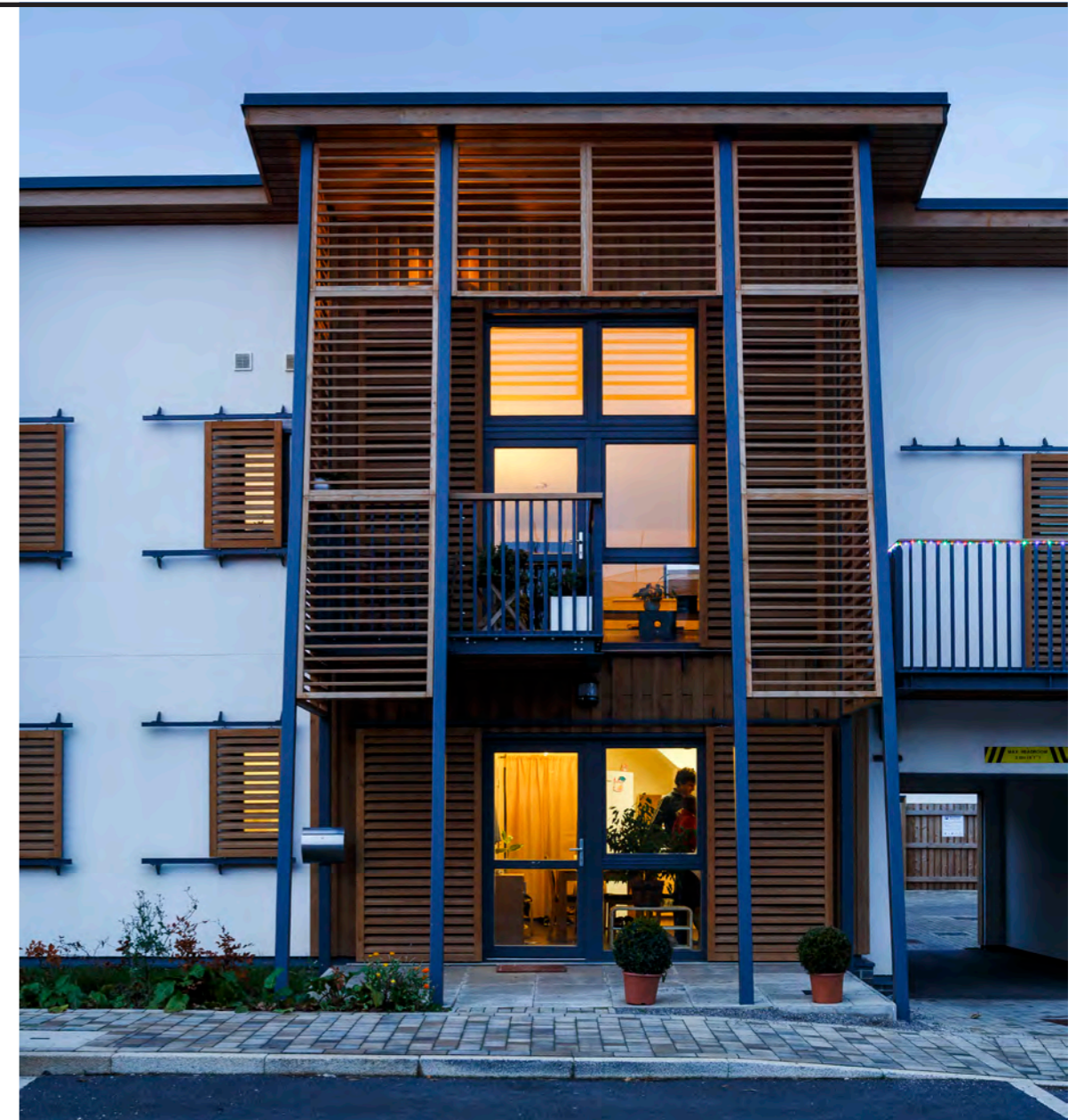


Image top Left: flats

Image Bottom Left: restoration of the grade II listed hall

Image Bottom Left: masterplan

Image Top Right: innovative housetypes with timber facades

Image Bottom Right: section of two storey cottage